



STAINLESS STEEL
SQUARE CORNER SCULLERY
BUDGET SINKS

"400" Series "600" Series

Item #: _____ **Qty #:** _____
Model #: _____
Project #: _____



ONE COMPARTMENT



THREE COMPARTMENT



TWO COMPARTMENT



FOUR COMPARTMENT

MATERIAL:

"400" Series is 16 gauge type 430 Series.
 "600" Series is 16 gauge type 304 Series.
 Galvanized tubular legs.
 1" adjustable plastic bullet feet.

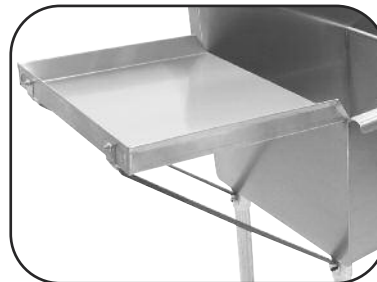
CONSTRUCTION:

All heli-arc welded.
 Welded areas blended to match adjacent surfaces and to a satin finish.

MECHANICAL:

Supply is 1/2" hot & cold.
 Faucet holes on 8" O.C.
 Waste drains are 1 1/2" IPS basket type and are included.
 Faucets are not included (see accessories).
 Four compartment units require two faucets.
 Three compartment units with 24" sink bowls require two faucets.

DETACHABLE DRAINBOARDS



Model #	Qty
N-5-818	
N-5-18	
N-5-24	
N-5-30	
N-5-36	
N-5-48	
N-54-24	
N-54-36	
N-54-48	

Drainboards 36" and 48" are supplied with legs for support.



Customer Service Available To Assist You 1-800-645-3166 8:30 am - 8:00 pm E.S.T.

Email Orders To: customer@advancetabco.com. For Smart Fabrication™ Quotes, Email To: smartfab@advancetabco.com or Fax To: 631-586-2933

NEW YORK
 Fax: (631) 242-6900

GEORGIA
 Fax: (770) 775-5625

TEXAS
 Fax: (972) 932-4795

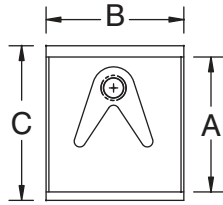
NEVADA
 Fax: (775) 972-1578

DIMENSIONS and SPECIFICATIONS

TOL Overall: ± .500" Interior: ± .250"

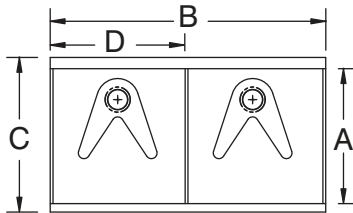
ALL DIMENSIONS ARE TYPICAL

ONE COMPARTMENT



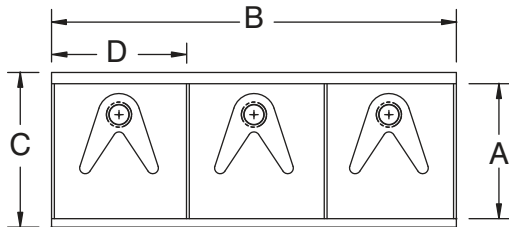
A	B	C	"400" Series 16 Ga. S/S "430"	"600" Series 16 Ga. S/S "300"	Ship Weight
18"	18"	21 1/2"	4-81-18	6-81-18	45 lbs.
21"	18"	24 1/2"	4-1-18	6-1-18	47 lbs.
21"	24"	24 1/2"	4-1-24	6-1-24	53 lbs.
21"	36"	24 1/2"	4-1-36	6-1-36	66 lbs.
24"	24"	27 1/2"	4-41-24	6-41-24	53 lbs.
24"	36"	27 1/2"	4-41-36	6-41-36	69 lbs.

TWO COMPARTMENTS



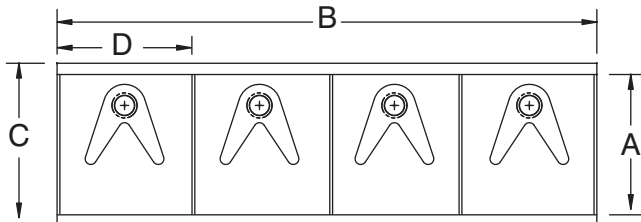
A	B	C	D	"400" Series 16 Ga. S/S "430"	"600" Series 16 Ga. S/S "300"	Ship Weight
21"	36"	24 1/2"	18"	4-2-36	6-2-36	73 lbs.
21"	48"	24 1/2"	24"	4-2-48	6-2-48	86 lbs.
21"	60"	24 1/2"	30"	4-2-60	6-2-60	100 lbs.
24"	48"	27 1/2"	24"	4-42-48	6-42-48	88 lbs.
24"	60"	27 1/2"	30"	4-42-60	6-42-60	108 lbs.

THREE COMPARTMENTS



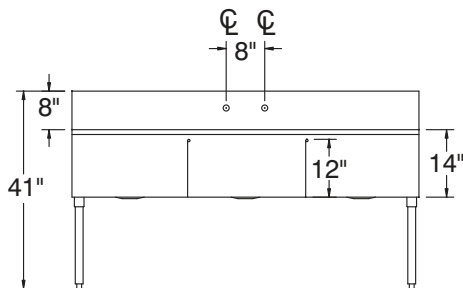
A	B	C	D	"400" Series 16 Ga. S/S "430"	"600" Series 16 Ga. S/S "300"	Ship Weight
21"	36"	24 1/2"	12"	4-3-36	6-3-36	78 lbs.
21"	48"	24 1/2"	16"	4-3-48	6-3-48	91 lbs.
21"	54"	24 1/2"	18"	4-3-54	6-3-54	98 lbs.
21"	72"	24 1/2"	24"	4-3-72	6-3-72	115 lbs.
24"	60"	27 1/2"	20"	4-43-60	6-43-60	105 lbs.
24"	72"	27 1/2"	24"	4-43-72	6-43-72	120 lbs.

FOUR COMPARTMENTS

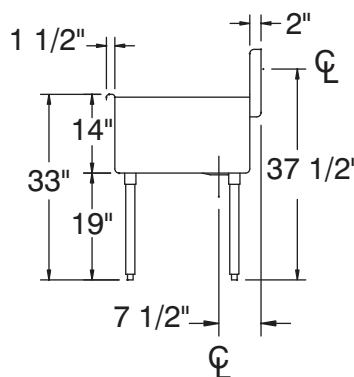


A	B	C	D	"400" Series 16 Ga. S/S "430"	"600" Series 16 Ga. S/S "300"	Ship Weight
21"	48"	24 1/2"	12"	4-4-48	6-4-48	96 lbs.
21"	60"	24 1/2"	15"	4-4-60	6-4-60	115 lbs.
21"	72"	24 1/2"	18"	4-4-72	6-4-72	120 lbs.

FRONT VIEW



PLUMBING ROUGH-IN



DETACHABLE DRAINBOARDS

Size	18 Ga. S/S "430"	Ship Weight
18 x 18	N-5-818	10 lbs.
21 x 18	N-5-18	11 lbs.
21 x 24	N-5-24	12 lbs.
21 x 30	N-5-30	22 lbs.
21 x 36	N-5-36	25 lbs.
21 x 48	N-5-48	28 lbs.
24 x 24	N-54-24	18 lbs.
24 x 36	N-54-36	32 lbs.
24 x 48	N-54-48	36 lbs.

